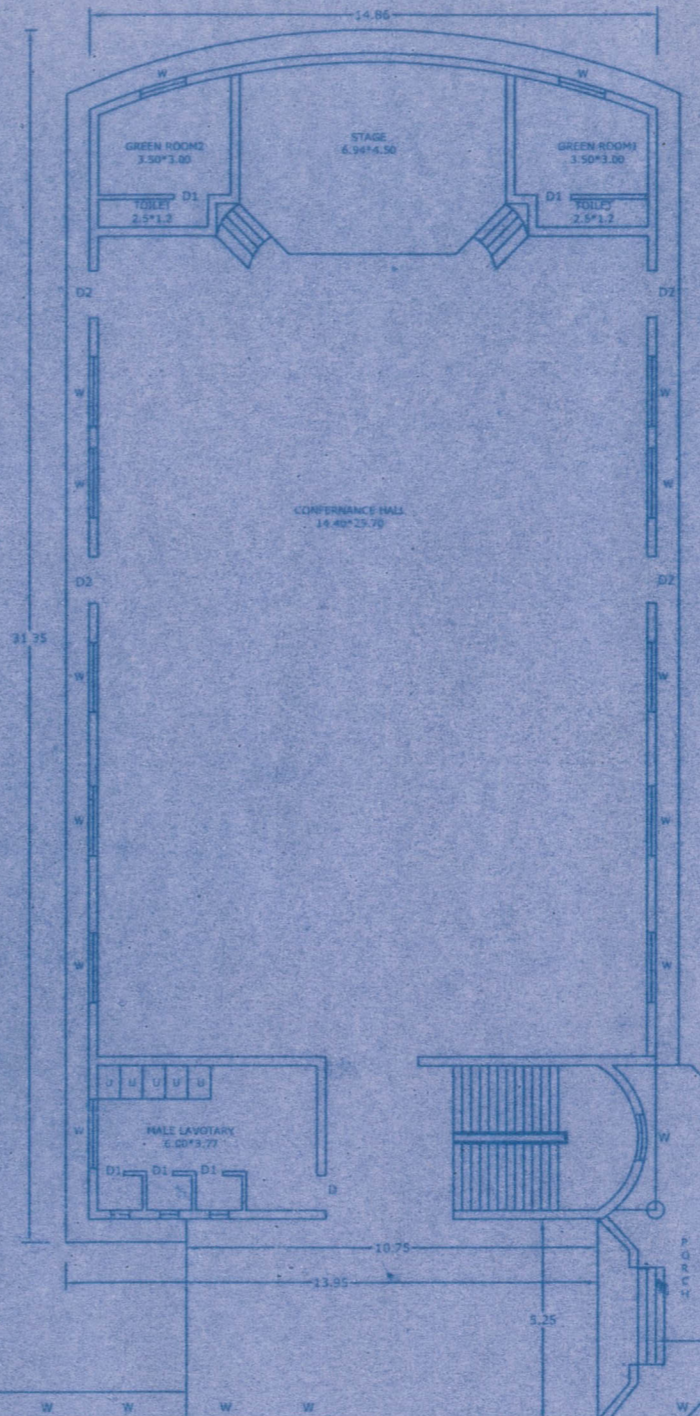


**EXISTING BUILDING FOR
SHRI SHIVAJI SHIKSHAN PRASARAK MANDAL'S
COLLEGE OF NURSING, BARSHI.**



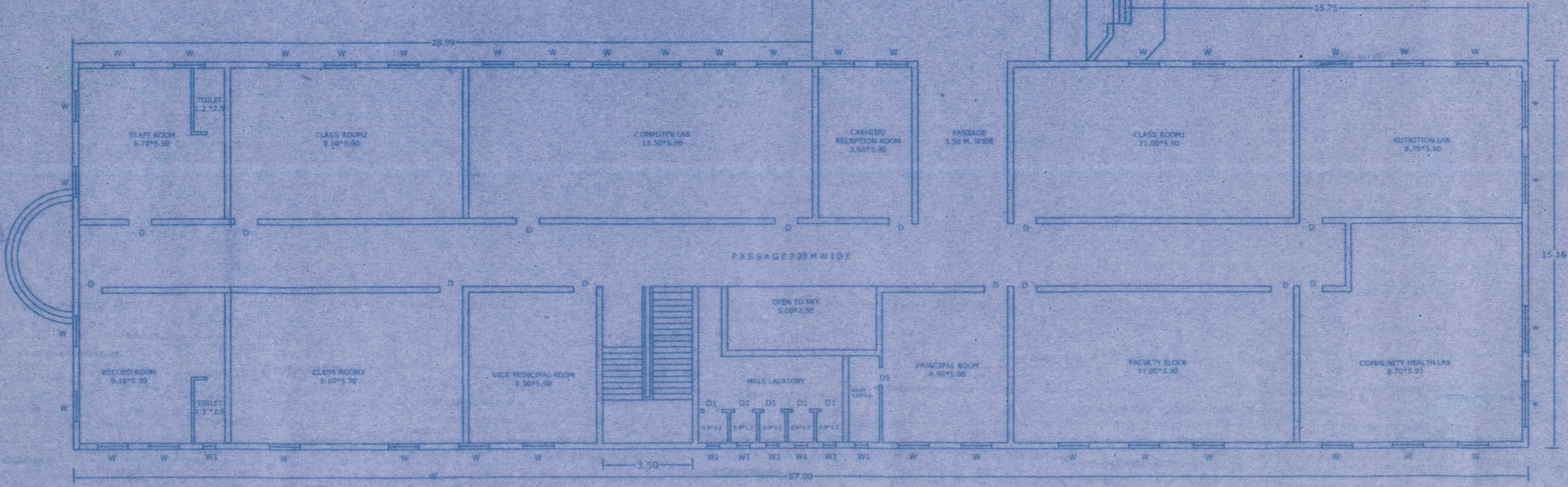
Area Statement

Sr. No.	Item	Detail
1	GROUND FLOOR	1373.26 Sq.M.
2	FIRST FLOOR	951.07 Sq.M.
	TOTAL	2324.33 Sq.M.

Detail of Infrastructure

Sr. No.	Ground Floor	Area	Area
1	CONFERENCE HALL 14.40*25.70	370.08 Sq.M.	3983.50 Sq.Ft.
2	CLASS ROOM1 11.00*5.90	64.90 Sq.M.	698.58 Sq.Ft.
3	CLASS ROOM2 9.10*5.90	53.69 Sq.M.	577.91 Sq.Ft.
4	CLASS ROOM3 9.10*5.90	53.69 Sq.M.	577.91 Sq.Ft.
5	NUTRITION LAB 8.70*5.90	51.33 Sq.M.	552.51 Sq.Ft.
6	COMMUNITY HEALTH LAB 8.70*5.90	51.33 Sq.M.	552.51 Sq.Ft.
7	FACULTY BLOCK 11.00*5.90	64.90 Sq.M.	698.58 Sq.Ft.
8	PRINCIPAL ROOM 4.90*5.90	28.91 Sq.M.	311.18 Sq.Ft.
9	VICE PRINCIPAL ROOM 5.00*5.90	29.5 Sq.M.	317.53 Sq.Ft.
10	RECORD ROOM 9.10*5.90	53.69 Sq.M.	577.91 Sq.Ft.
11	STAFF ROOM 5.70*5.90	33.63 Sq.M.	361.99 Sq.Ft.
12	CASHIER/ RECEPTION ROOM 3.66*5.90	21.59 Sq.M.	232.39 Sq.Ft.
13	COMPUTER LAB 13.50*5.90	79.65 Sq.M.	857.35 Sq.Ft.

Mule
MULE K. R.
D.C.E.
Civil Engineer &
Regd. Govt. Contractors



GROUND FLOOR PLAN